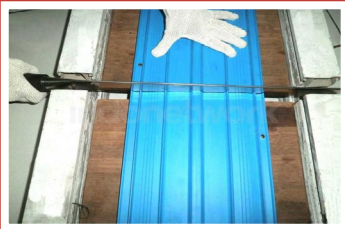


High Performance Waterstops



X-Stop PVC
X-Stop HWS



X-CALIBUR®
CONSTRUCTION CHEMISTRY

Waterstops for Water Excluding and Water Retaining Concrete Structures

X-Stop PVC Waterstops

Centrally and externally placed PVC waterstops

X-Stop PVC Waterstops are manufactured from a high quality virgin PVC compound which has been formulated to give excellent flexibility and durability. They are extruded in a range of profiles. All profiles can be supplied in recycled PVC if required.

Advantages

- Proven design
- 4 'Diamond' bulbs act in compression and extension
- Deep rib tortuous path provides better bond to concrete and watertightness.
- Wide expansion bulb enables joint fillers to be fully supported.
- Flexible to accommodate movement
- Reinforced eyelet edge flanges for positive fixing
- Simple job site splicing
- Full range of intersection pieces
- Suitable for use in potable water structures

Uses

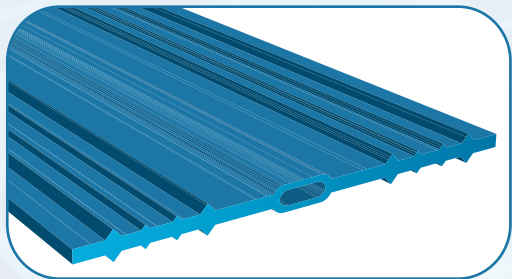
- Reservoirs, water towers and sewage tanks
- Dams, culverts, canals and spillways
- Bunded areas surrounding liquid retaining tanks
- Basements and underground car parks
- Tunnels and subways
- Abutments and retaining walls
- Roof decks and podium areas

Laboratory Test Data

Property	Typical Results
Tensile strength (BS 2782)	>15MPa
Elongation at break (BS 2782)	>300%
Shore A hardness (ASTM D2240)	80 to 90
Hydrostatic head (IHM)	Up to 100m

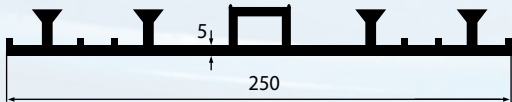
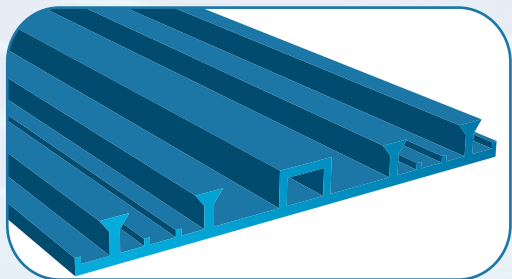
Expansion Joint Profiles

CF250X *

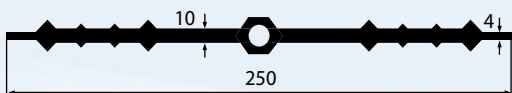
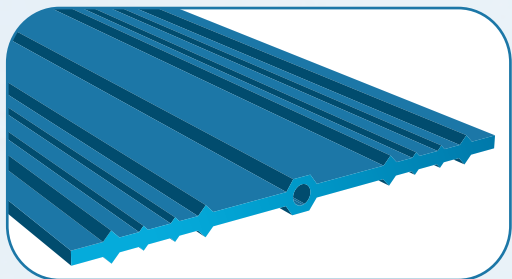


* Also available in 200 mm

RF250X

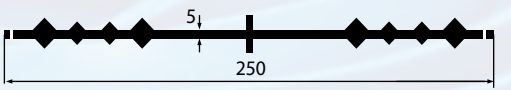
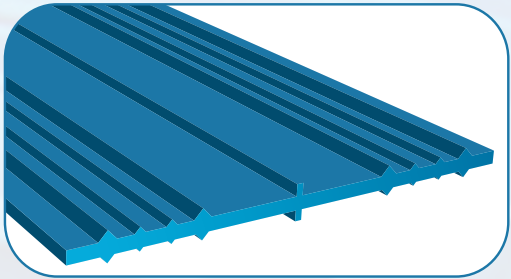


CHD250X



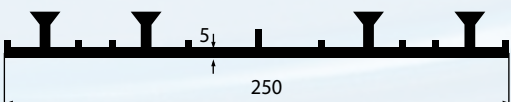
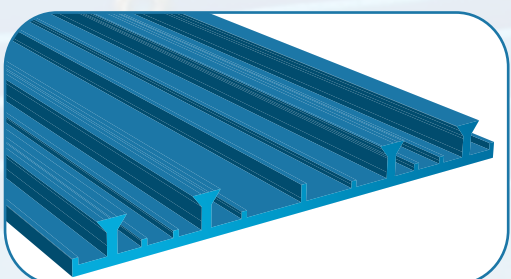
Construction Joint Profiles

CF250C *

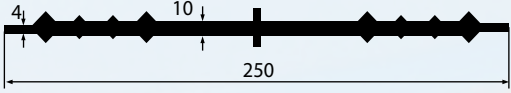
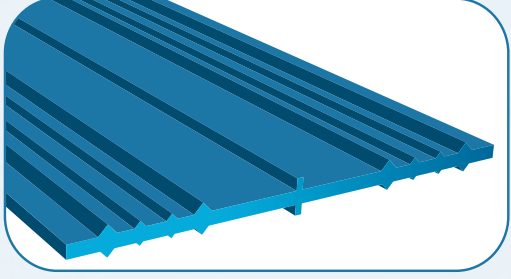


* Also available in 200 mm

RF250C



CHD250C



*All Dimensions in mm

X-Stop HWS Waterstops

Extruded hydrophilic waterstop

Swellable waterstops developed for use in construction joints. X-Stop HWS are bentonite free, hydrophilic composites developed to perform in saline, potable and ground water conditions.

Available in three profiles

HWS 520	General purpose rectangular sections for use in construction joints.
HWS 1020	Thicker section used in high security construction joints and as an internal waterstop for penetrations.
HWS 1020R	Stainless steel reinforced for long lengths to restrict longitudinal swelling.

Advantages

- Easy to install
- Easy to join
- High swell
- Works in saline conditions
- Works in contaminated ground water
- Non toxic

Uses

- Construction joints
- Pile caps
- Basements
- Raft slabs
- Secant piles
- Sheet piles

Physical Properties

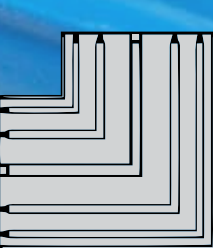
Elongation	>450%
Hydrostatic pressure resistance	100m

Swell Test Data

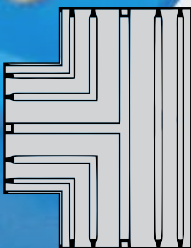
	Typical Results
Fresh potable water	>300%
Water containing 500 ppm CaCl ₂	>200%
Sea water	>160%

Nominal Sizes and Lengths

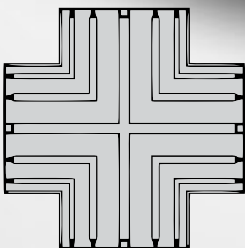
Profile	Size	Length
HWS 520	5 x 20mm	20m rolls
HWS 1020 + 1020R	10 x 20mm	10m rolls



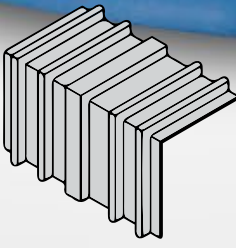
Flat mitre (MOF)



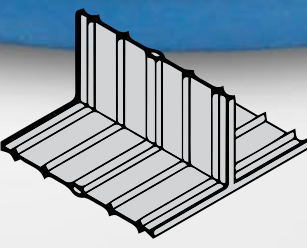
3 Way on flat



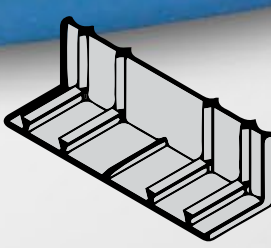
4 Way on flat



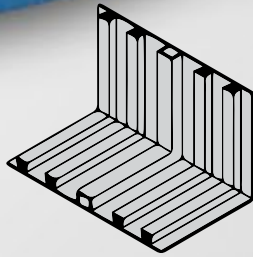
270° mitre on edge (MOE EXT)



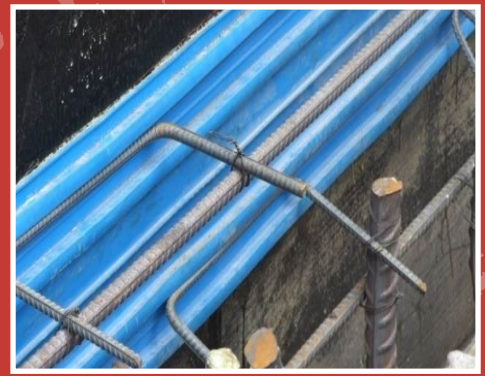
90° mitre on edge (MOE)



90° mitre on edge (MOE INT)



T-piece on edge (T)



X-Stop PVC Waterstop | Ocean Heights | Dubai Marina



X-Stop PVC Waterstop | Al Sowah Island | Abu Dhabi



X-Stop PVC Waterstop | Dubai Metro | Dubai

Other Project References



Burj Khalifa Fountain, Dubai



Al Habtoor Polo Club, Dubai



Dragon Mart Expansion, Dubai



American School of Dubai



Al Jalila Children Speciality, Dubai



Dubai Int'l Airport Phase II, Dubai



Jebel Ali M Power Station, Dubai



Infinity Tower, Dubai